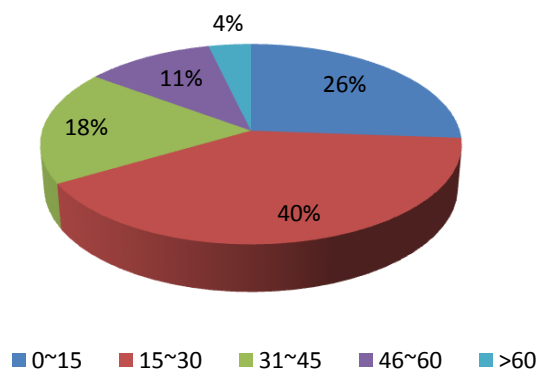


Socio- Economic Household Survey in Muzaffarabad City

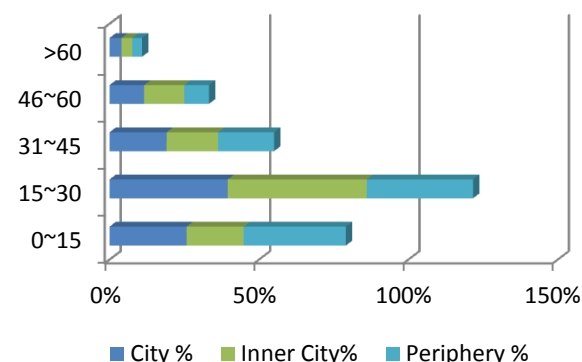
Age Groups

Age Groups	Total %	Area Type		
		City %	Inner City%	Periphery %
0~15	26%	26%	19%	34%
15~30	40%	40%	47%	36%
31~45	18%	19%	17%	19%
46~60	11%	12%	13%	8%
>60	4%	4%	4%	3%

Age Groups Ratios by city



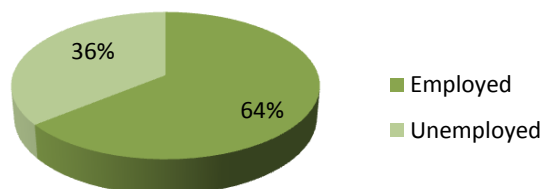
Age Groups Ratios By Area type



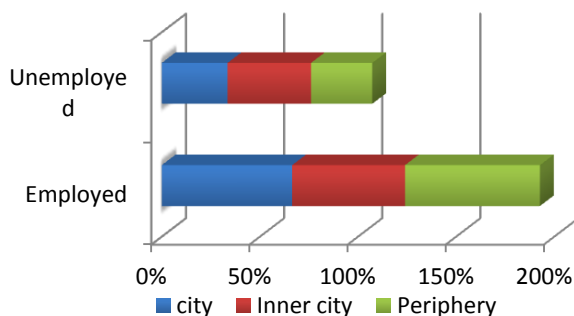
Employment

Job Status	Total	city	Inner city	Periphery
Employed	64%	66%	57%	69%
Unemployed	36%	34%	43%	31%

Employment Ratio by City



Employment ratio by area type

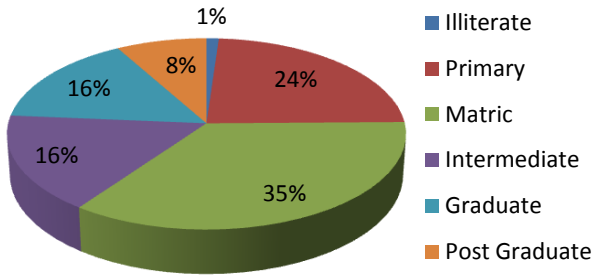


Literacy

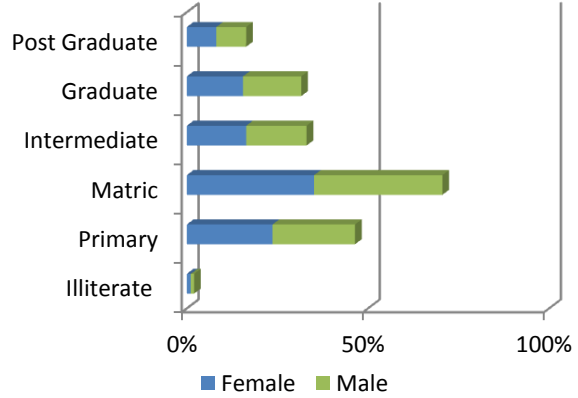
Education Level	Total	Female	Male
Illiterate	1%	1%	1%
Primary	24%	24%	23%
Matric	35%	35%	35%
Intermediate	16%	16%	17%
Graduate	16%	16%	16%
Post Graduate	8%	8%	8%
Education Level	City	Inner city	Periphery
Illiterate	0%	3%	1%
Primary	23%	17%	34%

Matric	33%	31%	44%
Intermediate	19%	17%	10%
Graduate	16%	21%	8%
Post Graduate	9%	12%	2%

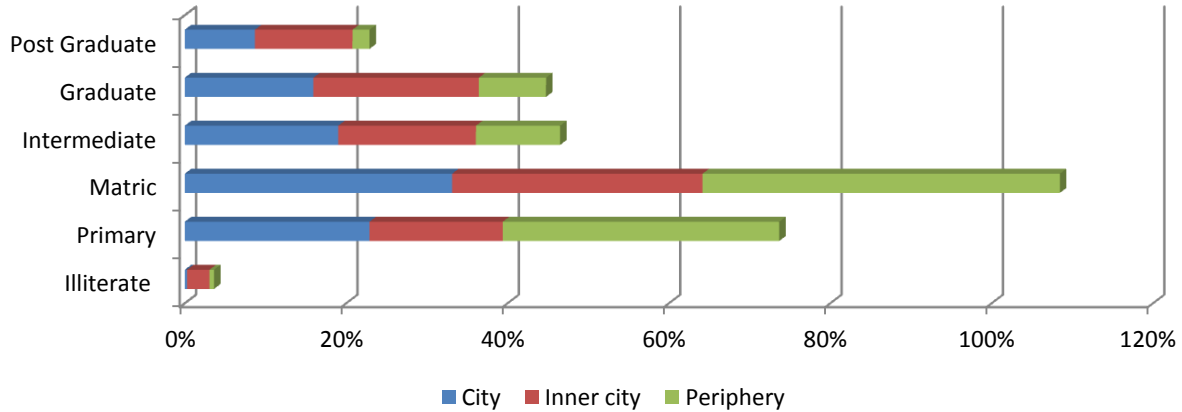
Literacy Ratio by City



Literacy Ratios by Gender



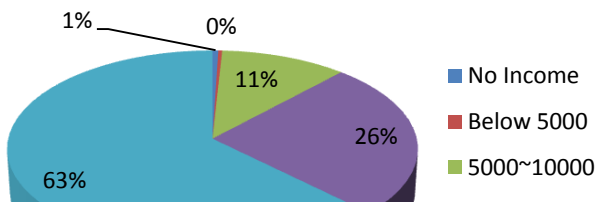
Literacy Ratios by Area Type



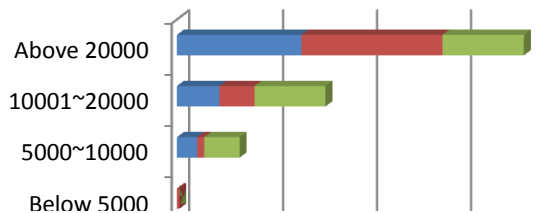
Monthly Income

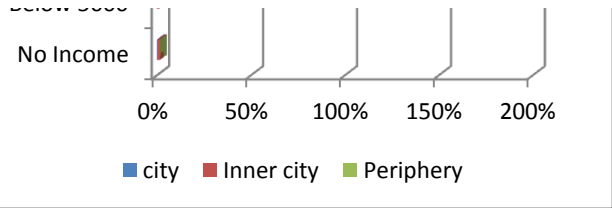
Monthly Income	Total	city	Inner city	Periphery
No Income	1%	0%	1%	0%
Below 5000	0%	0%	1%	0%
5000~10000	11%	11%	4%	19%
10001~20000	26%	23%	19%	38%
Above 20000	63%	66%	75%	43%

Monthly Income Grope Ratios by City



Monthly Income Group Ratios by Area Type

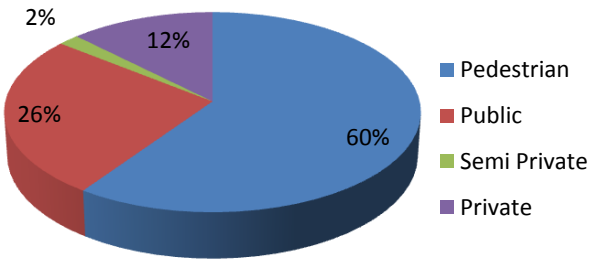




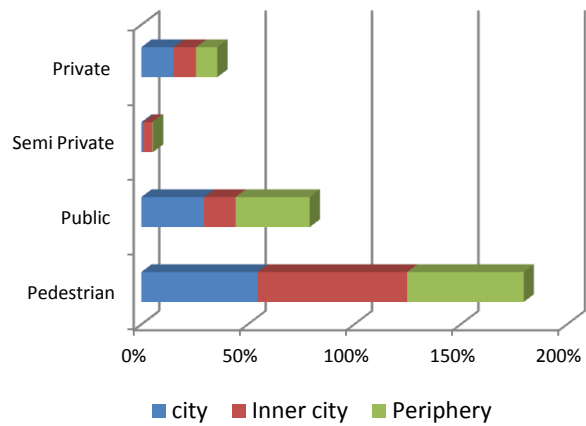
Modes of Travelling

Travelling Mode	Total	city	Inner city	Periphery
Pedestrian	60%	55%	70%	55%
Public	26%	29%	15%	35%
Semi Private	2%	1%	4%	0%
Private	12%	15%	10%	10%

Travelling Modes Ratios by City



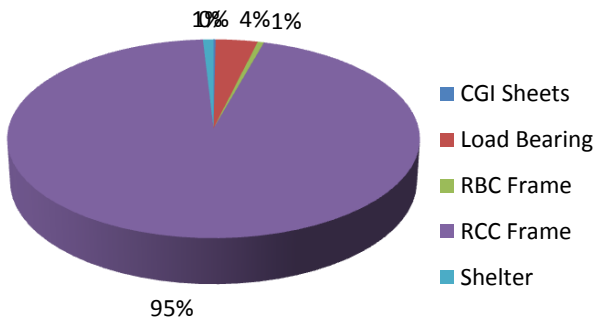
Travelling Modes Ratios by Area Type



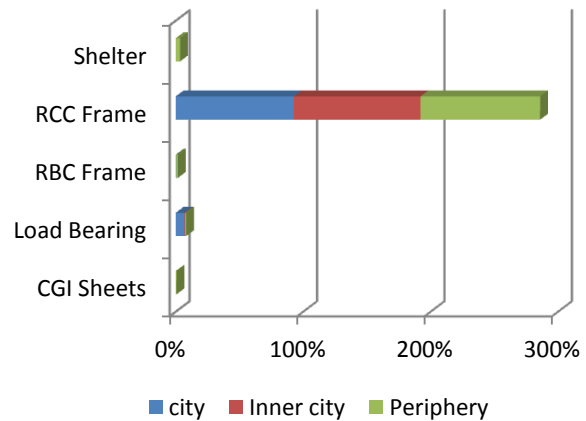
Type of Housing Structure

Structure Type	Total	city	Inner city	Periphery
CGI Sheets	0%	0%	0%	1%
Load Bearing	4%	7%	1%	1%
RBC Frame	1%	0%	0%	1%
RCC Frame	95%	93%	99%	94%
Shelter	1%	0%	0%	3%

Structure Ratios by City



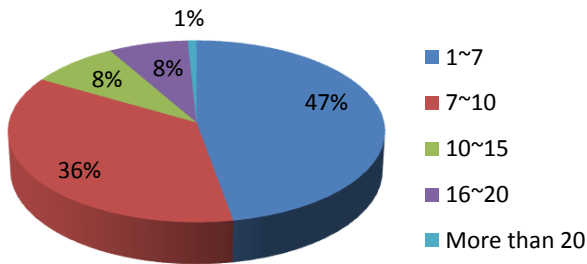
Structure Ratios by Area Type



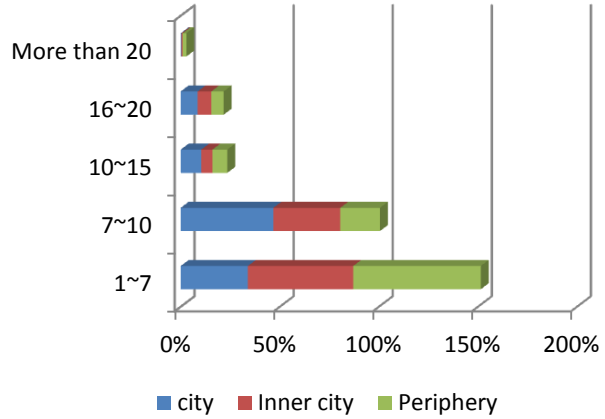
Housing Plot Size

Plot size (Marlas)	Total	city	Inner city	Periphery
1~7	47%	34%	53%	64%
7~10	36%	47%	34%	20%
10~15	8%	10%	6%	8%
16~20	8%	9%	7%	6%
More than 20	1%	0%	1%	2%

Housing Plot size Ratios by City



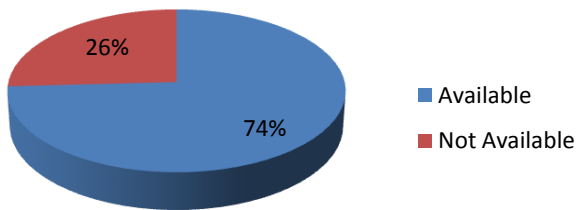
Housing Plot Size by Area Type



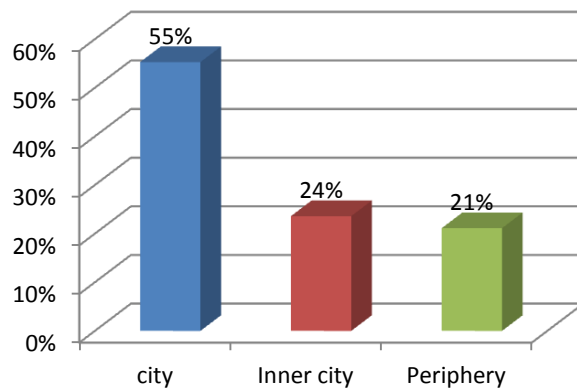
Drinking Water Availability

Over all City		Water availability by Area		
Available	Not Available	city	Inner city	Periphery
74%	26%	55%	24%	21%

Drinking water Availability



Drinking water availability by Area Type



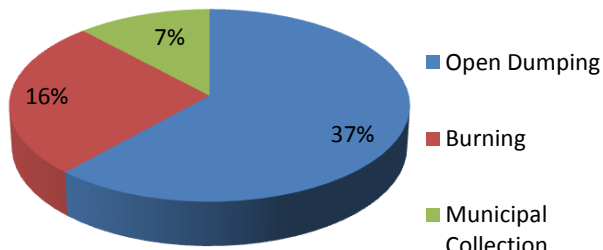
Solid Waste Disposal

Disposal Method	Total	city	Inner city	Periphery
Open Dumping	37%	38%	11%	51%
Burning	16%	76%	0%	24%
Municipal Collection	7%	49%	44%	7%

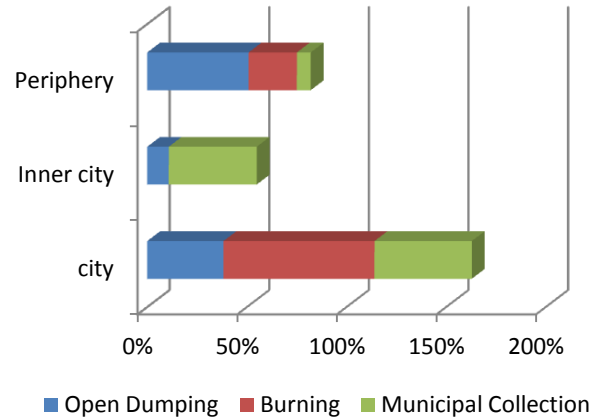
Solid Waste Disposal Ratios by City

Solid Waste Disposal by Area Type

Solid waste Disposal Ratios by City



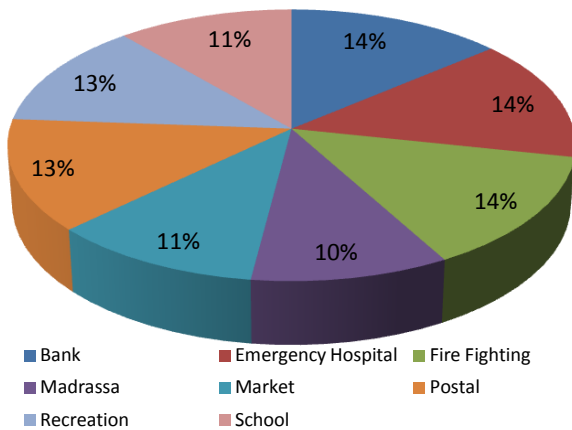
Solid waste Disposal by Area Type



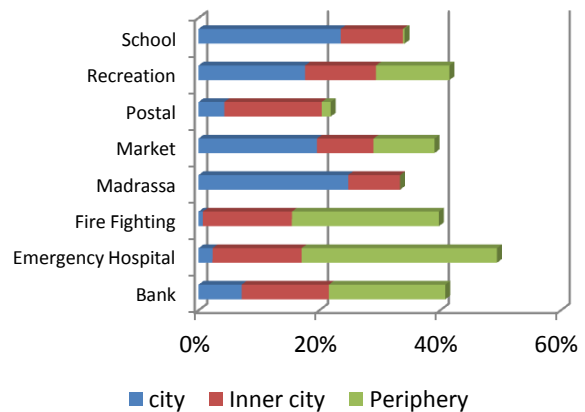
Services Available

Service Name	Total	city	Inner city	Periphery
Bank	14%	7%	14%	19%
Emergency Hospital	14%	2%	15%	32%
Fire Fighting	14%	1%	15%	24%
Madrasa	10%	25%	9%	0%
Market	11%	20%	9%	10%
Postal	13%	4%	16%	1%
Recreation	13%	18%	12%	12%
School	11%	24%	10%	0%

Services Availability Ratio by City



Services Availability Ratio by Area Type

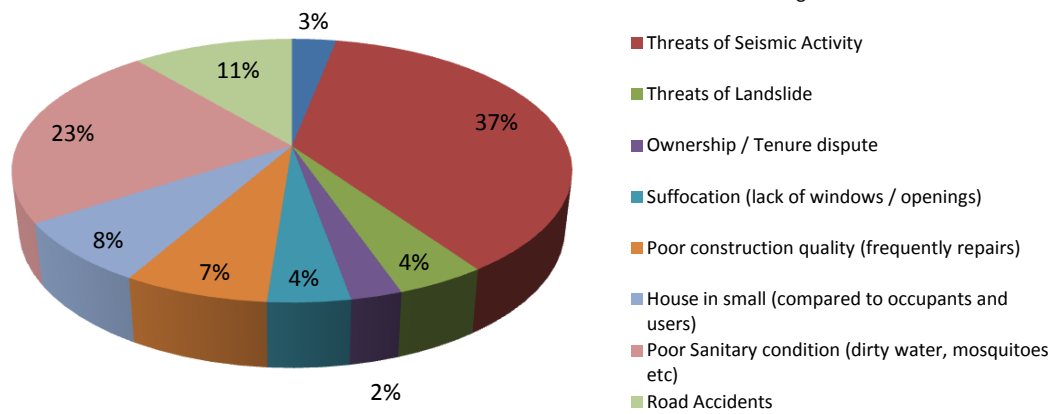


Issues

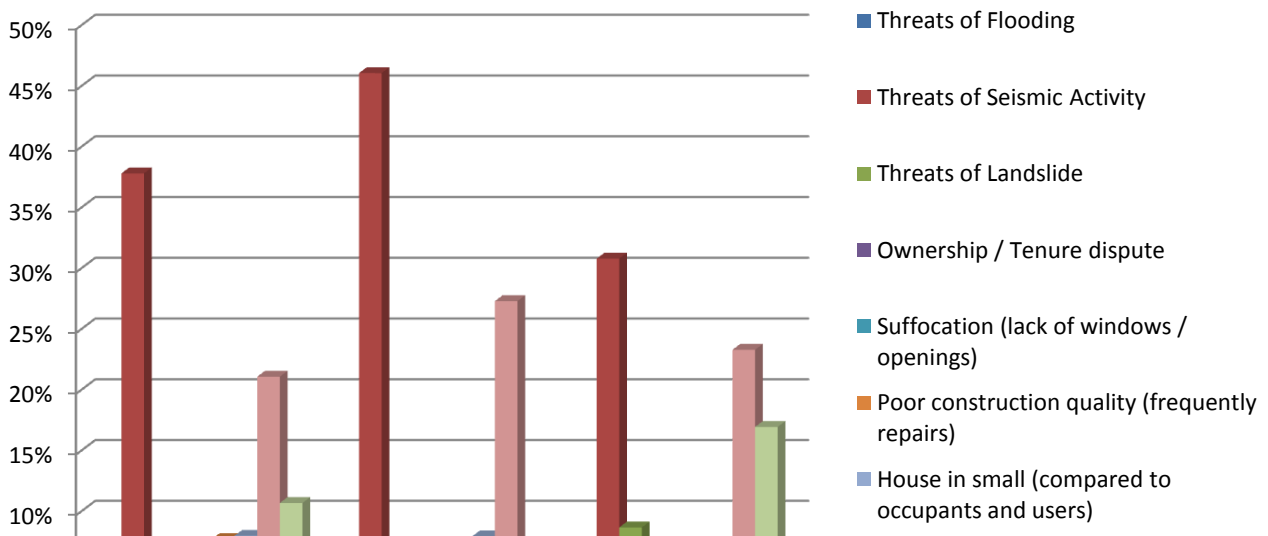
Issue Name	Total	city	Inner city	Periphery
Threats of Flooding	3%	4%	2%	3%
Threats of Seismic Activity	37%	38%	46%	31%
Threats of Landslide	4%	2%	2%	9%

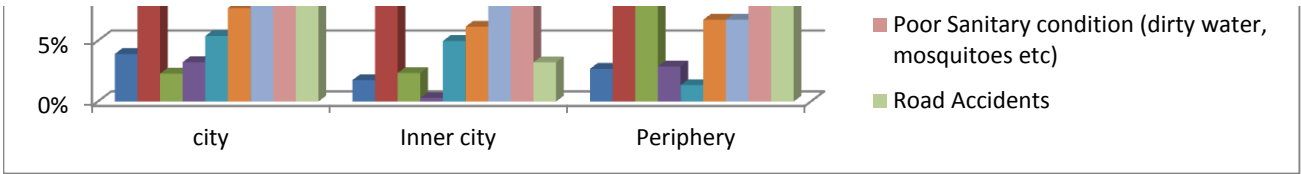
Ownership / Tenure dispute	2%	3%	0%	3%
Suffocation (lack of windows / openings)	4%	5%	5%	1%
Poor construction quality (frequently repairs)	7%	8%	6%	7%
House in small (compared to occupants and users)	8%	8%	8%	7%
Poor Sanitary condition (dirty water, mosquitoes etc)	23%	21%	27%	23%
Road Accidents	11%	11%	3%	17%

Issues Ratio by City



Issues Ratio by Area Type





* Source : Survey conducted by UN-Habitat Pakistan in 2011.

