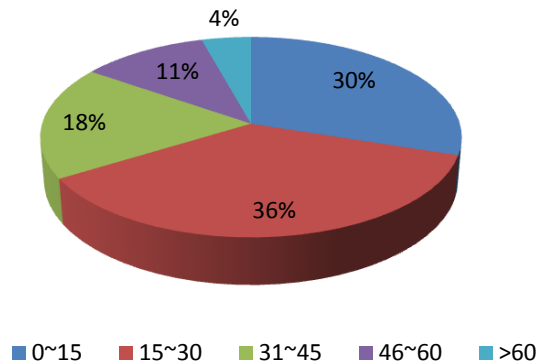


Socio- Economic Household Survey in Sialkot City

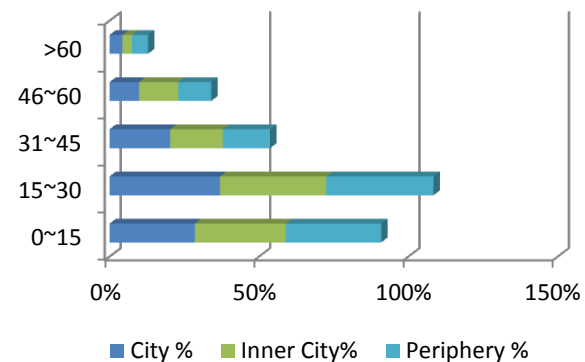
Age Groups

Age Groups	Total %	Area Type		
		City %	Inner City%	Periphery %
0~15	30%	29%	30%	32%
15~30	36%	37%	36%	36%
31~45	18%	20%	18%	16%
46~60	11%	10%	13%	11%
>60	4%	4%	3%	5%

Age Groups Ratios by city



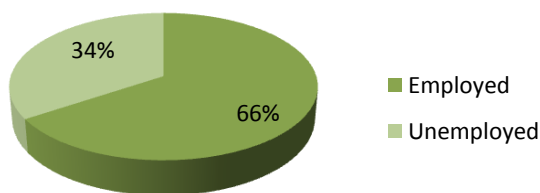
Age Groups Ratios By Area type



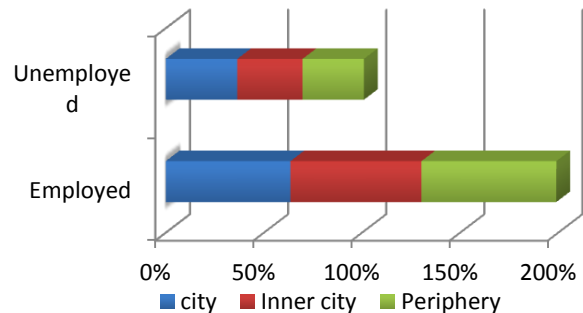
Employment

Job Status	Total	city	Inner city	Periphery
Employed	66%	64%	67%	69%
Unemployed	34%	36%	33%	31%

Employment Ratio by City



Employment ratio by area type

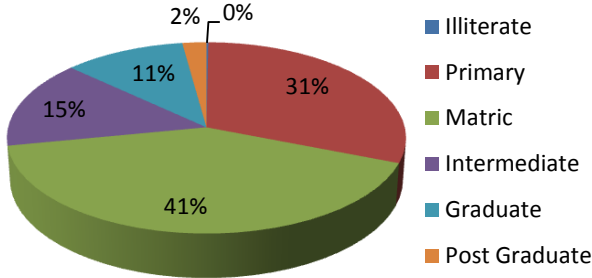


Literacy

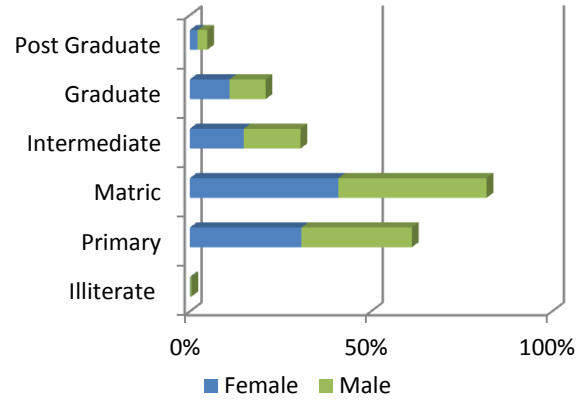
Education Level	Total	Female	Male
Illiterate	0%	0%	0%
Primary	31%	31%	31%
Matric	41%	41%	41%
Intermediate	15%	15%	16%
Graduate	11%	11%	10%
Post Graduate	2%	2%	3%
Education Level	City	Inner city	Periphery
Illiterate	0%	0%	0%

Primary	28%	29%	38%
Matric	44%	35%	42%
Intermediate	16%	17%	11%
Graduate	11%	15%	7%
Post Graduate	2%	3%	1%

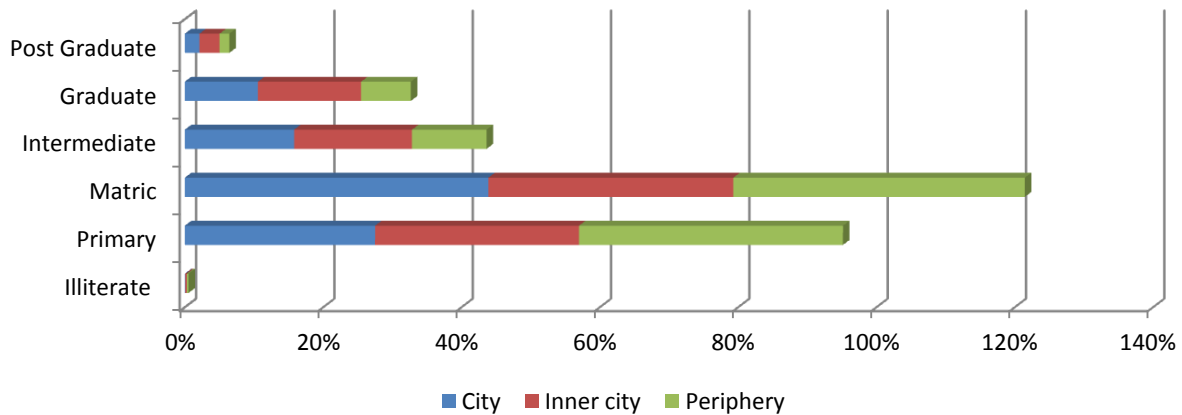
Literacy Ratio by City



Literacy Ratios by Gender



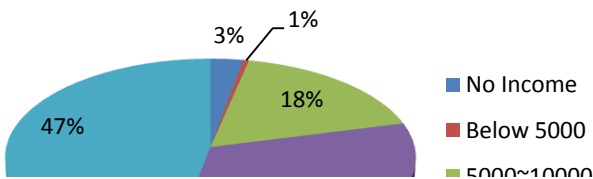
Literacy Ratios by Area Type



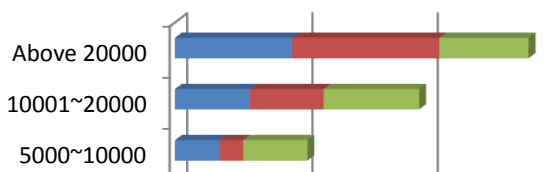
Monthly Income

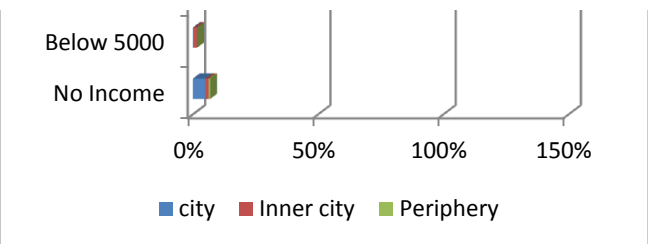
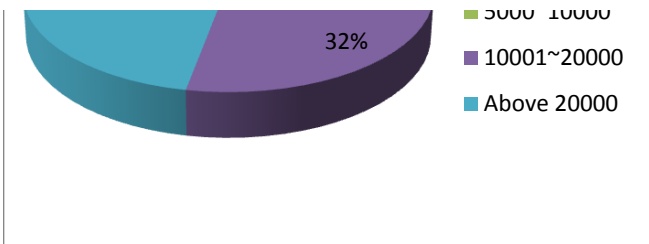
Monthly Income	Total	city	Inner city	Periphery
No Income	3%	5%	1%	1%
Below 5000	1%	0%	1%	0%
5000~10000	18%	18%	9%	26%
10001~20000	32%	30%	29%	38%
Above 20000	47%	47%	59%	36%

Monthly Income Grope Ratios by City



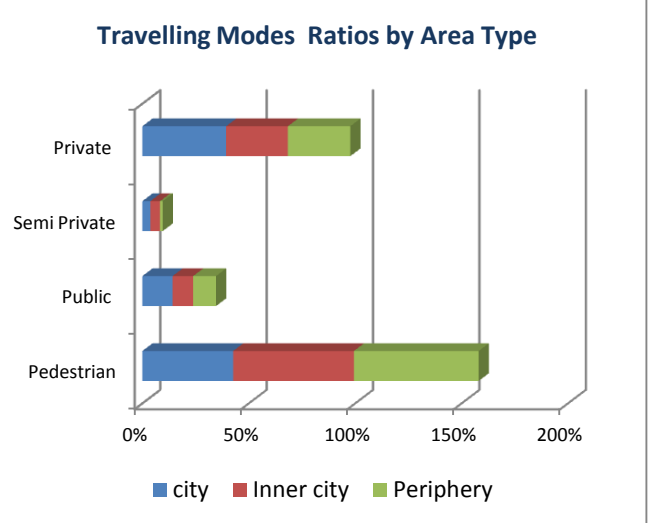
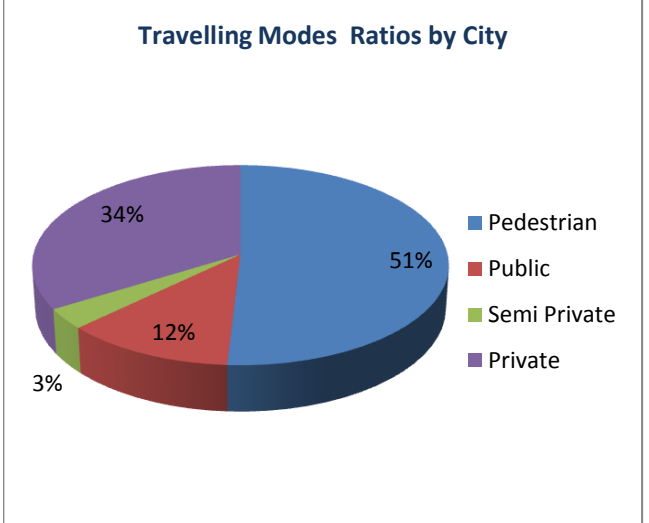
Monthly Income Group Ratios by Area Type





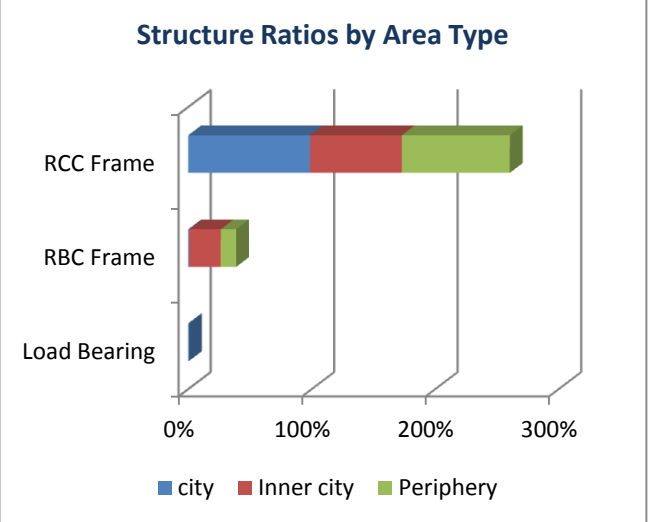
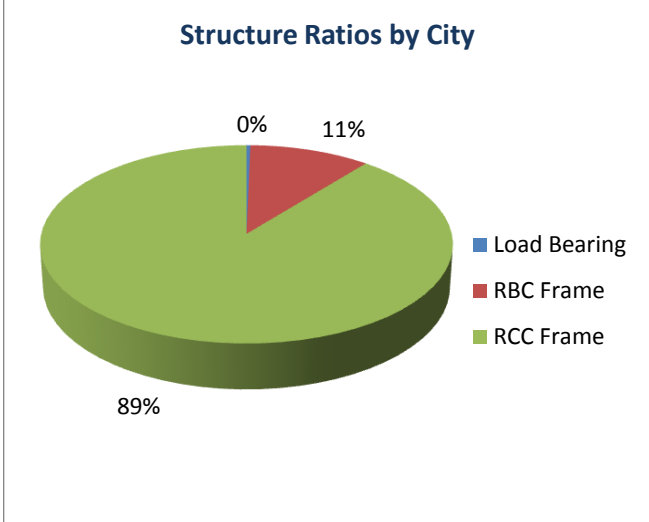
Modes of Travelling

Travelling Mode	Total	city	Inner city	Periphery
<i>Pedestrian</i>	51%	43%	57%	59%
<i>Public</i>	12%	14%	10%	11%
<i>Semi Private</i>	3%	4%	5%	1%
<i>Private</i>	34%	39%	29%	29%



Type of Housing Structure

Structure Type	Total	city	Inner city	Periphery
<i>Load Bearing</i>	0%	1%	0%	0%
<i>RBC Frame</i>	11%	1%	26%	13%
<i>RCC Frame</i>	89%	99%	74%	88%

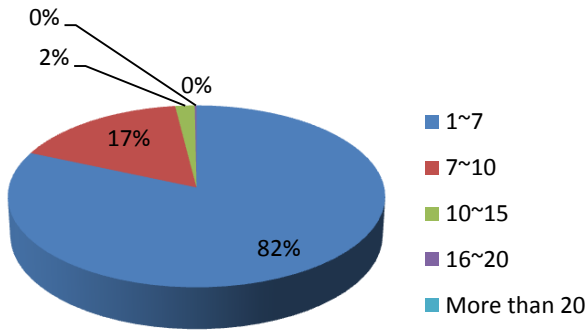


Housing Plot Size

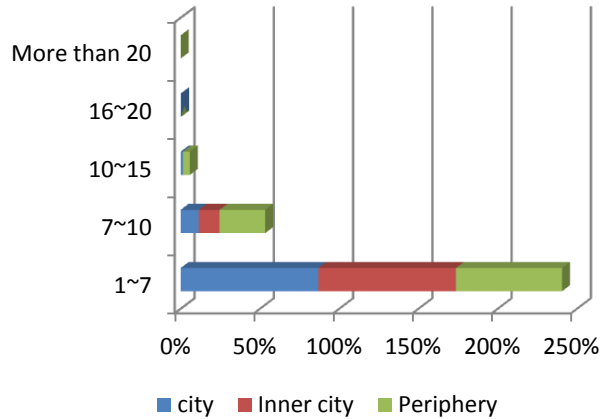
Plot size (Marlas)	Total	city	Inner city	Periphery
--------------------	-------	------	------------	-----------

1~7	82%	87%	87%	67%
7~10	17%	11%	13%	29%
10~15	2%	1%	0%	4%
16~20	0%	0%	0%	0%
More than 20	0%	0%	0%	0%

Housing Plot size Ratios by City



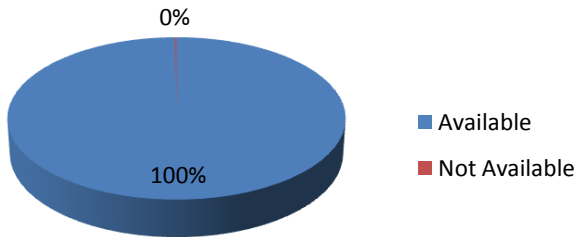
Housing Plot Size by Area Type



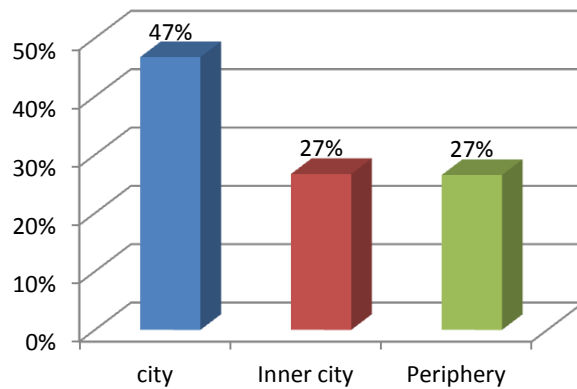
Drinking Water Availability

Over all City		Water availability by Area		
Available	Not Available	city	Inner city	Periphery
100%	0%	47%	27%	27%

Drinking water Availability



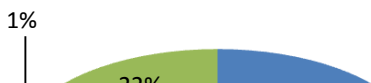
Drinking water availability by Area Type



Solid Waste Disposal

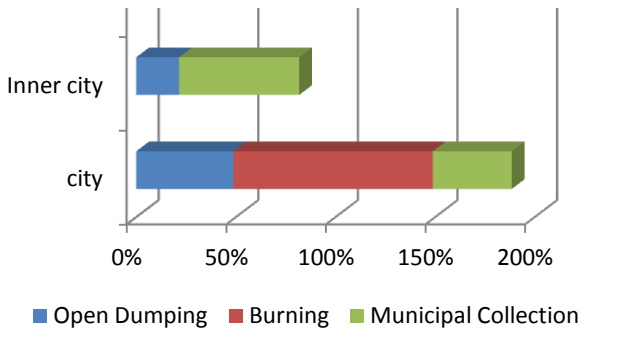
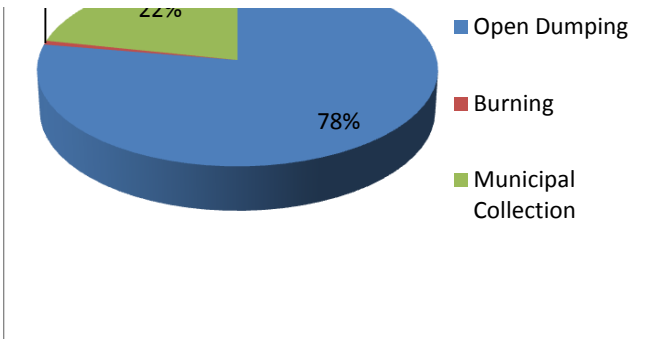
Disposal Method	Total	city	Inner city	Periphery
Open Dumping	78%	49%	22%	30%
Burning	1%	100%	0%	0%
Municipal Collection	22%	40%	60%	0%

Solid Waste Disposal Ratios by City



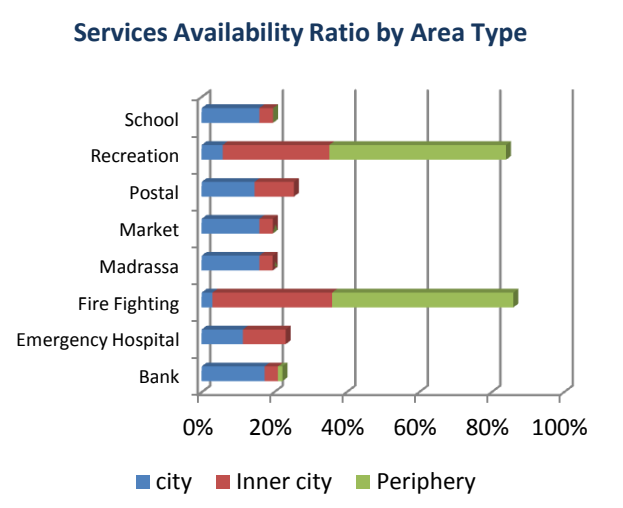
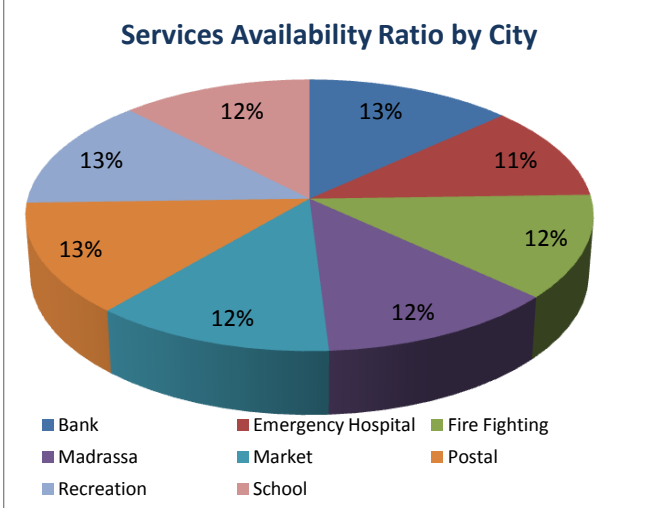
Solid Waste Disposal by Area Type





Services Available

Service Name	Total	city	Inner city	Periphery
Bank	13%	17%	4%	1%
Emergency Hospital	11%	11%	12%	0%
Fire Fighting	12%	3%	33%	50%
Madrasa	12%	16%	4%	0%
Market	12%	16%	4%	0%
Postal	13%	15%	11%	0%
Recreation	13%	6%	29%	49%
School	12%	16%	4%	0%

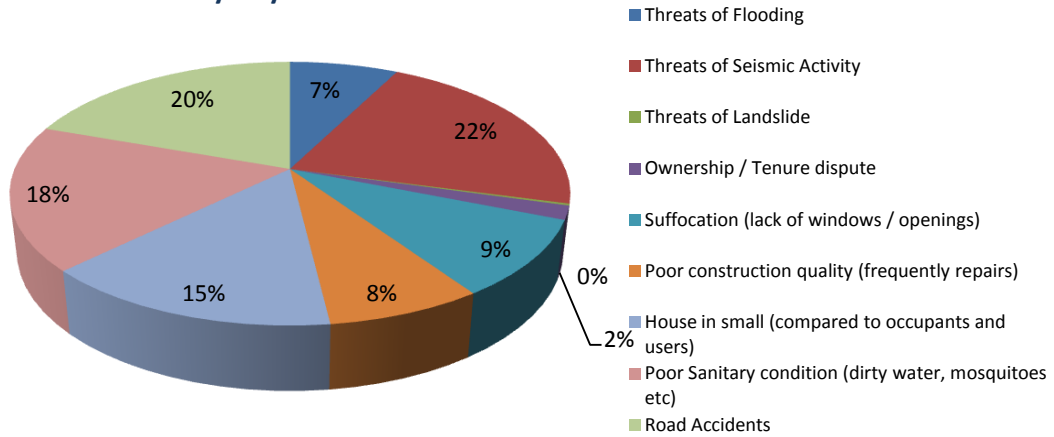


Issues

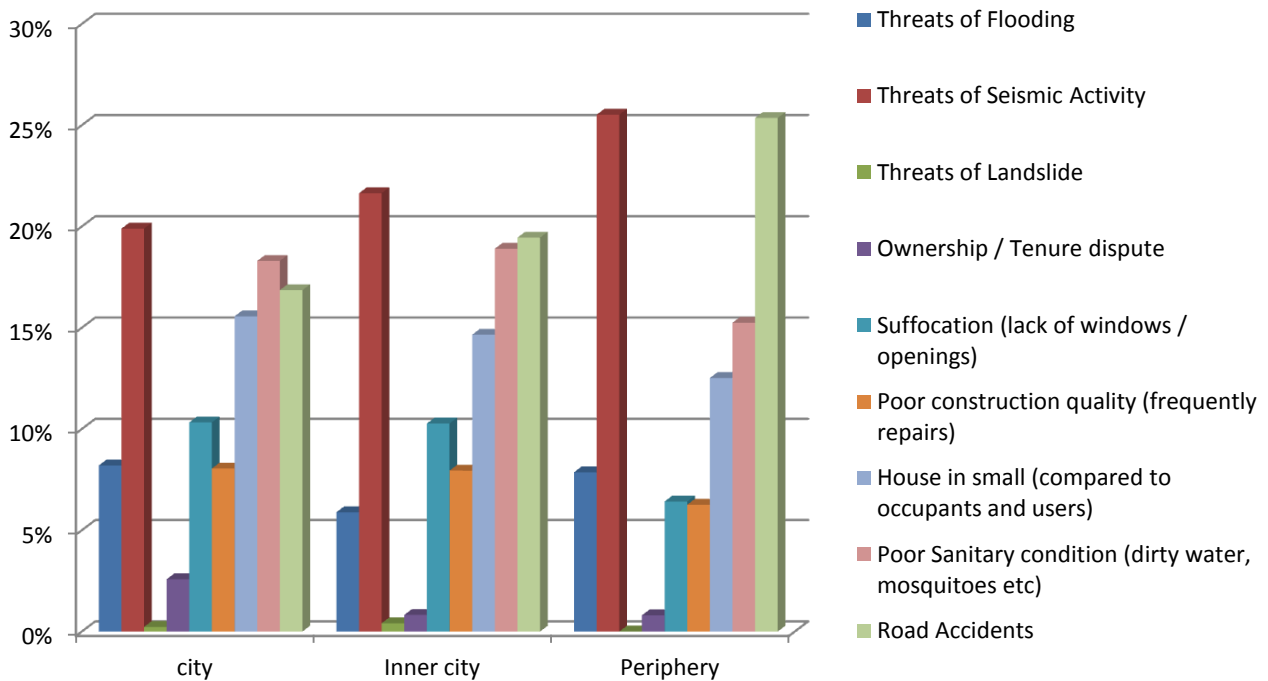
Issue Name	Total	city	Inner city	Periphery
Threats of Flooding	7%	8%	6%	8%
Threats of Seismic Activity	22%	20%	22%	26%
Threats of Landslide	0%	0%	0%	0%
Ownership / Tenure dispute	2%	3%	1%	1%
Suffocation (lack of windows / openings)	9%	10%	10%	6%

Poor construction quality (frequently repairs)	8%	8%	8%	6%
House in small (compared to occupants and users)	15%	16%	15%	13%
Poor Sanitary condition (dirty water, mosquitoes etc)	18%	18%	19%	15%
Road Accidents	20%	17%	19%	25%

Issues Ratio by City



Issues Ratio by Area Type



* Source : Survey conducted by UN-Habitat Pakistan in 2011.

